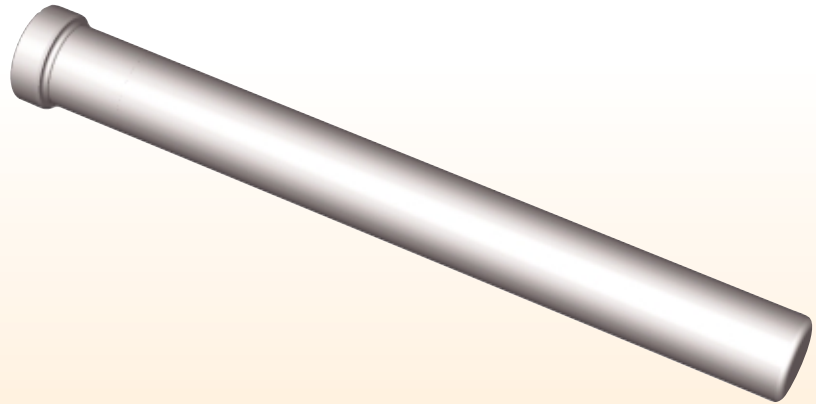
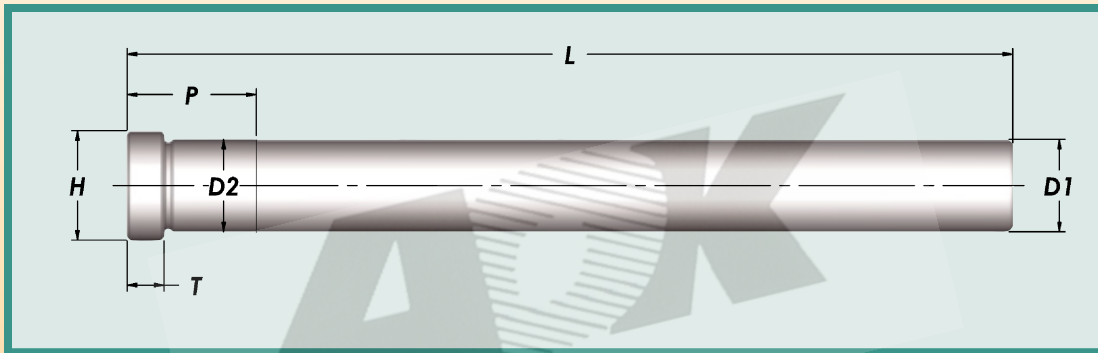




# Angle Pins



- Manufactured from H-13 steel.
- Surface hardness 65-80 Rc.
- Core hardness 35-40 Rc.
- Ground, nitrided and polished.



Nominal Diameter	D1 +.0000 -.0005	D2 +.0005 -.0000	H +.000 -.010	T +.000 -.005
3/8	.374	.376	.49	.25
1/2	.499	.501	.61	.25
5/8	.624	.626	.74	.25
3/4	.749	.751	.86	.25

Catalog Number	Diameter	L +.12 -.00	PFL +.000 -.062
AP37L06	3/8	6"	7/8
AP37L10	3/8	10"	1-3/8
AP50L06	1/2	6"	7/8
AP50L10	1/2	10"	1-3/8
AP62L06	5/8	6"	7/8
AP62L10	5/8	10"	1-3/8
AP75L10	3/4	10"	1-3/8